



# GAT MONTHLY MEMBERSHIP PROGRESS REPORT

Results as of: 11/30/2020

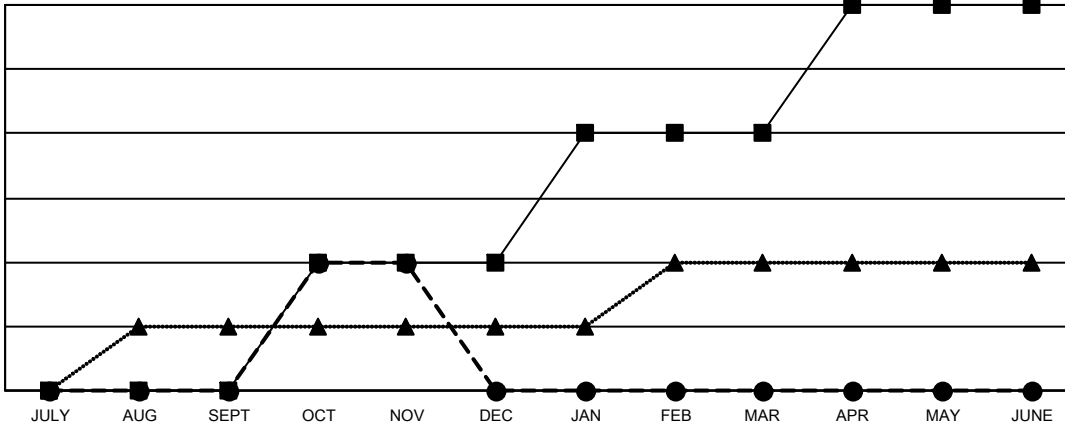
Multiple District 13

LOCATION: OHIO

| Clubs                 |               |           |               |
|-----------------------|---------------|-----------|---------------|
| RESULTS FOR 2020-2021 |               |           |               |
| QUARTER               | NEW CLUB GOAL | NEW CLUBS | DROPPED CLUBS |
| JULY/AUG/SEPT         | 0             | 0         | 3             |
| OCT/NOV/DEC           | 2             | 2         | 3             |
| JAN/FEB/MAR           | 2             | 0         | 0             |
| APR/MAY/JUNE          | 2             | 0         | 0             |

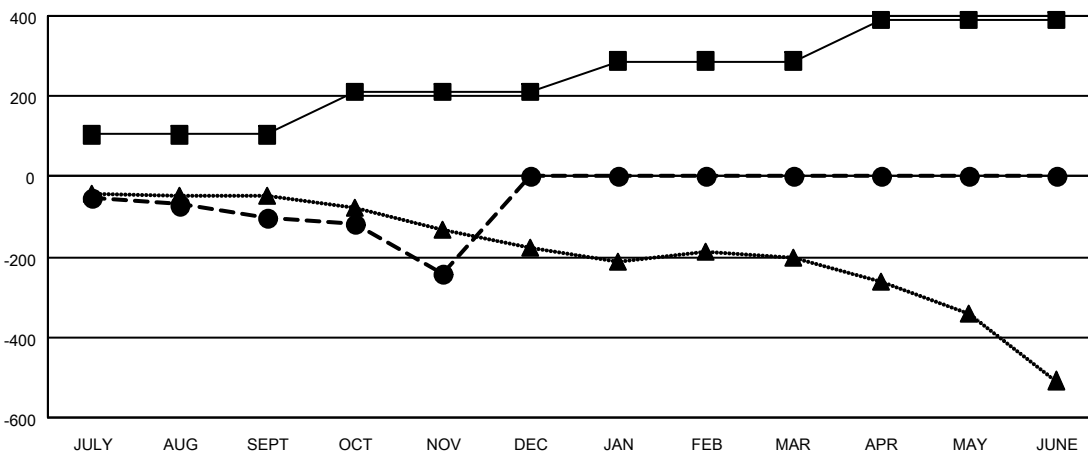
| Members               |                        |                      |  |
|-----------------------|------------------------|----------------------|--|
| RESULTS FOR 2020-2021 |                        |                      |  |
| QUARTER               | MEMBER GROWTH NET GOAL | MEMBER GROWTH ACTUAL | DROPPED MEMBERS ACTUAL (including transfers) |
| JULY/AUG/SEPT         | 104                    | 118                  | 202  |
| OCT/NOV/DEC           | 109                    | 143                  | 270  |
| JAN/FEB/MAR           | 75                     | 0                    | 0  |
| APR/MAY/JUNE          | 104                    | 0                    | 0  |

GOALS AND ACTUAL NEW CLUBS CUMULATIVE



- - CURRENT YEAR GOALS FOR NEW CLUBS
- - CURRENT YEAR ACTUAL NEW CLUBS
- ▲ - LAST YEAR ACTUAL NEW CLUBS

GOALS AND ACTUAL MEMBERS CUMULATIVE



- - MEMBER GROWTH NET GOAL
- - MEMBER GROWTH ACTUAL
- ▲ - LAST YEAR MEMBERSHIP ACTUAL

|                        |            |
|------------------------|------------|
| DROPPED CLUBS: 6       |            |
| <u>DROPPED MEMBERS</u> |            |
| DECEASED               | 73         |
| CLUB CANCELLED         | 19         |
| OTHER                  | 380        |
| <b>TOTAL</b>           | <b>472</b> |

|   |
|---|
| 90 CLUBS OF 388 ADDED 1 OR MORE NEW MEMBERS               |
| <a href="#">CLICK HERE FOR CUMULATIVE MEMBERSHIP DATA</a> |

|                                 |                |
|---------------------------------|----------------|
| <u>GENDER DISTRIBUTION</u>      |                |
| MALE                            | 7,421 (70.82%) |
| FEMALE                          | 3,058 (29.18%) |
| TOTAL FAMILY UNIT MEMBERS       | 2,072          |
| FAMILY MEMBERS PAYING HALF DUES | 1,059          |